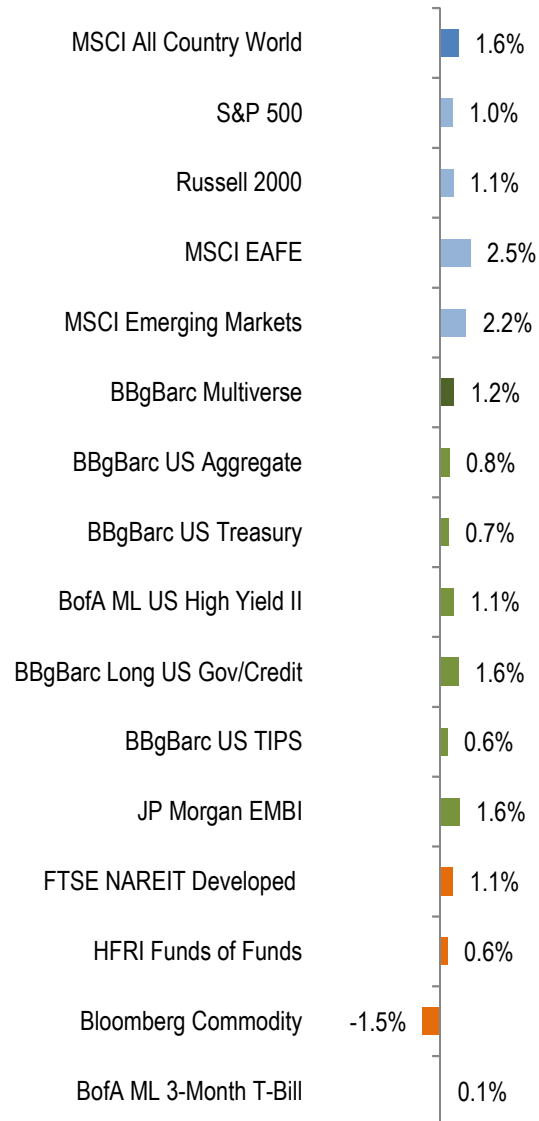
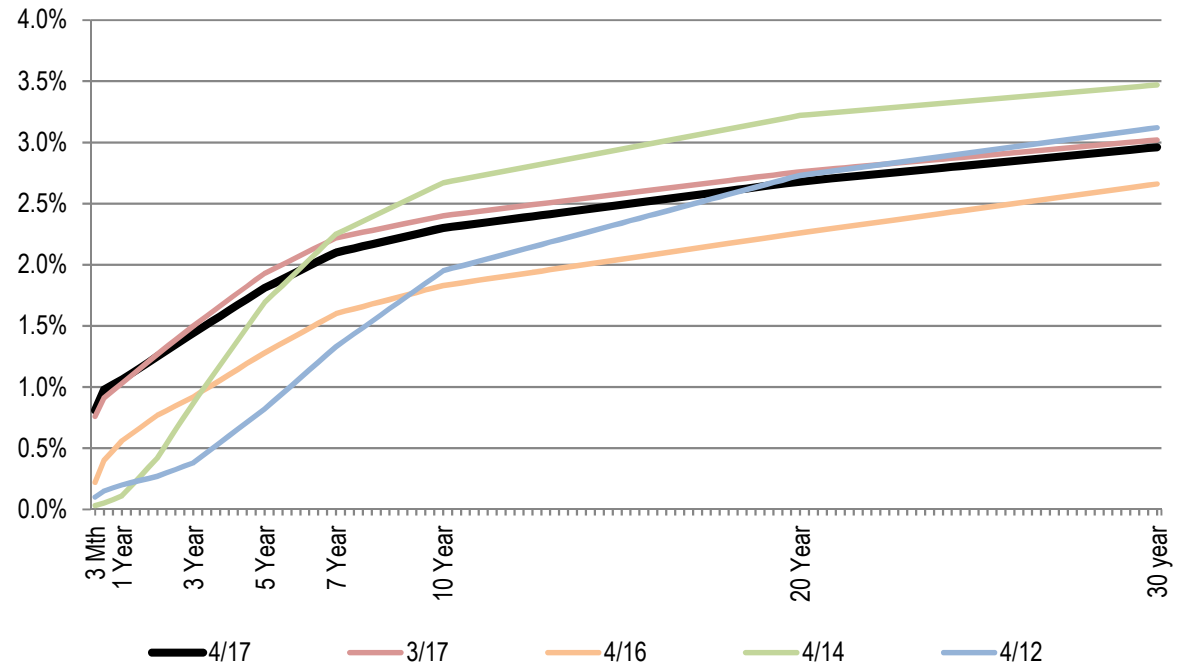


As of April 30, 2017

Quarter to Date



US Treasury Yield Curve



	<u>MTD</u>	<u>QTD</u>	<u>YTD</u>	<u>1 Year</u>	<u>3 Years</u>	<u>5 Years</u>	<u>10 Years</u>
S&P 500	1.0%	1.0%	7.2%	17.9%	10.5%	13.7%	7.2%
Russell 2000	1.1%	1.1%	3.6%	25.6%	9.0%	13.0%	7.0%
MSCI EAFE	2.5%	2.5%	10.0%	11.3%	0.9%	6.8%	0.9%
MSCI Emerging Markets	2.2%	2.2%	13.9%	19.1%	1.8%	1.5%	2.5%
BBgBarc US Aggregate	0.8%	0.8%	1.6%	0.8%	2.7%	2.3%	4.3%
FTSE NAREIT Developed	1.1%	1.1%	3.2%	2.1%	4.6%	7.1%	1.1%
HFRI Fund of Funds	0.6%	0.6%	3.0%	6.3%	2.2%	3.4%	1.1%
BofA ML 3-Month T-Bill	0.1%	0.1%	0.2%	0.4%	0.2%	0.2%	0.6%

Returns for periods longer than 1 year are annualized.